



THE ATHENIAN SCHOOL



Summer Program

The Athenian School Summer Program is a unique combination of academic, athletic, and artistic opportunities for students throughout the Bay Area. Our goal is to offer students fun and productive learning experiences. We do this through a wide variety of programs designed to improve skills, enhance learning, and build confidence. Keeping students interested in learning during the summer is accomplished through the expertise and enthusiasm of our extraordinary staff. We have developed classes and activities that we know students will find enriching and rewarding. We are confident students will find our summer programs to be a valuable part of their continuing education and remembered long after summer ends.

To observe the July 4th holiday, the campus will be closed.



Registration

To register on-line please go to www.athenian-summer.org. Click on the link to register on-line. If you do not choose to register on-line, you can mail in your registration with a check. Be aware there is an additional charge of \$25 on manual or walk-in registrations. It is recommended that you register on-line to avoid the additional charge. By signing up on-line you will save yourself the hassle of duplicating the same information for each child. If you have more than one child, please set up one account for the entire family and not a separate account for each child. A deposit is required at the time of registration. We accept VISA or Mastercard. If you do not wish to use your credit card on-line, you can mail your check and still register on-line. To avoid any late fees, please use the option to post date your future payments. **Your account will not be charged unless you set-up the post date payment option.** You cannot go back into your account at a later time to enter a payment.

If you do not have access to a computer, registration forms are included in this brochure. You may fill them out and mail them in. Either way you decide to register, once your registration is received, you will be mailed a notice to confirm enrollment along with a statement of account with the school's tax ID#, amounts paid and your balance due. Students and Campers are enrolled in programs on a first come basis. Classes/camps have limited enrollment and early registration is recommended. In the

event a class you have signed up for is full, you will be notified, and your child will be put on a waiting list.

On-line registrations received by May 2, 2008 are eligible to receive a \$25 earlybird discount. Walk-in registrations are not eligible to receive any discounts.

Siblings are eligible for one \$25 discount per session. The first child does not receive the discount. The discount applies to the sibling only.

When registering on-line, go to the discounts link to give your child the appropriate discount. Adjustments will be made to any registration that was over or under charged.



Confirmation of Registration

Confirmation letters will be generated upon receipt of your registration. Registrations are processed daily, but in the event that you have not received your confirmation within one week of the start date, please call Debra Ataman at 925.362.7214 or email at debra.ataman@athenian.org.

Remember if you arrive on the first day of class to register, you take the risk of the class or camp being full and there is an extra \$25 charge for walk-in registrations.



Deposits/Payments

All deposits are non-refundable. A \$100 deposit for each camp or summer enrichment session must accompany each registration form. Registration forms will be returned if the appropriate deposit is not included. Deposits, once confirmed, ensure your child's place in the course or activity. All fees must be paid in full by the beginning of each class or session. **Fees not paid in full by the end of summer August 8, will incur a late fee of \$50 and an additional \$50 for each unpaid month thereafter.** This excludes Session 4 extended care fees.

Refunds

A full refund will be issued only when The Athenian School cancels a class or session. **No refunds of tuition or fees will be made after May 30, 2008.** You are, in fact, reserving a space in class/camp for your child. The summer program's hiring and purchasing are directly determined by enrollment. Therefore, we regret that no exception to this policy can be made. **All deposits are non-refundable.** There are no refunds for lunches or the Breakfast Club.

If there is any dispute of payment for a class or camp fee, you must fill out a request for a refund/credit form.

NO REFUNDS OF TUITION OR FEES WILL BE MADE AFTER MAY 30, 2008 WITHOUT AN APPROVAL FROM A DIRECTOR. ALL REQUESTS MUST BE SUBMITTED TO SPECIAL PROGRAMS BY THE LAST DAY OF THE SUMMER (August 8, 2008).

Changes/Cancellations

We ask that you make your selections carefully. A \$10 fee will be charged for each change or cancellation to your student's/camper's schedule. All changes or cancellations must be made in writing. Changes will be made on a space available basis. The Athenian School reserves the right to cancel a class or program for any reason including lack of enrollment. In such cases, a full refund, including all deposits, will be made.

If a child cannot return to camp due to illness or accident, the unused portion of the session will be credited for future use by the withdrawing camper. A doctor's certified note must accompany the withdrawal request. You can get a credit form from the summer programs office.

If a student or camper is registered and it is later determined there is a date conflict or if for any reason the camper/student cannot attend, a "DROP" form must be filled out. If this form is not received you will still be considered registered and therefore, responsible for the fees. You are in fact reserving a space in camp or class for your child. This form can be found on-line or outside the summer programs office.



Breakfast Club

Breakfast is now available to campers and students in the Main Hall for a fee of \$50 per session. Pre-registration required. The kitchen will be open from 8:00 a.m. to 8:45 a.m. Breakfast will be served cafeteria-style and includes wholesome food: fruit, yogurt, cereal, pancakes, eggs, waffles, bacon, sausage, and juice. Food is ordered based on our registrations received. Therefore, no refunds will be offered for this program. Students who are signed up for Breakfast Club are not charged for morning extended care fees.



Lunch Program

Lunches are available for purchase **by each two week session.** For an additional fee your child will enjoy delicious lunch entrées featuring a variety of foods. Camper lunches include an entrée, chips, drink, fruit, and cookies and are served at their camp location. Items may be substituted or alternated on some days. Lunch is not provided on field trips days. Here is what a typical 2-week camper menu looks like:

Monday	Chicken Nuggets
Tuesday	Hamburger
Wednesday	Corn Dogs
Thursday	Pasta/Grilled Cheese
Friday	Pizza
Monday	Hot Dogs
Tuesday	Hamburgers
Wednesday	Chinese/Quesadias
Thursday	Bean Burritos
Friday	Pizza



Summer Enrichment students are served lunch in the main hall and will go through a “lunch line”. Again lunch typically consists of a hot entrée, vegetables, a vegetarian option, and every day a salad bar is available. Sodas are not offered. Lemonade and other fruit juice will be available.

To participate, you may sign up on-line or fill out and return the enclosed form before the program begins.

You must sign up for lunch in advance. **Lunch sign-ups on the first day of the week will not be accepted.**

Adventure Camp may purchase lunch by the day. The price is \$6.00 daily.

Make your selections carefully. **There is no refund on lunches. No exceptions will be made.**

Campers and summer school students are all welcome to bring a bag lunch.



Grades

The classes we offer are for enrichment only; therefore, a grade for credit is not given.

In the classes where a student is graded, a grade with a comment will be mailed home. Final grades will be mailed home approximately two weeks after the class ends. You may schedule additional time to meet or have a conversation with a teacher.

Four week classes will have one final assessment of your child’s performance in class mailed at the end of the session. Six-week classes will receive a written assessment approximately three weeks into the session and a final assessment at the end of the session.



Transportation

Transportation is available to campers and students for an additional fee of \$50

per two week session. For one way morning or afternoon service it is \$25. Pre-registration is required. If you want your child to ride the bus, you may register on-line or fill out the registration form on page 22. When registering on-line, make sure you follow the transportation link to select which session you will use transportation. You will also need to indicate which line and stop you will use.

School buses pick up and drop off at various pre-determined locations from Lafayette to Dublin/Pleasanton. You will find a detailed schedule on page 23.

Safety in our transportation system is our highest priority. A daily safety inspection is

performed on each vehicle. All drivers are certified school bus drivers and as such follow all state and Federal driving regulations. All school buses are equipped with cell phones.

All participants are asked to be at the bus stop at least five minutes early. Athenian reserves the right to suspend bus privileges of anyone found behaving in an inappropriate manner.

Before the first day of camp, it is strongly recommended you make a test run and locate the bus stop you will be using. Please do not call the office the first day of camp to inquire about the location or time of a pick-up or drop-off.

The first day of camp our staff will be greeting, directing, and supervising parents and students. Other than the receptionist, WE WILL NOT BE ON THE PHONES.

You do not need to call the office if your child will be absent and not taking the bus on any particular day.

If your child is not on the bus at the pick-up location, please remain calm. In all but the rarest cases, children have fallen asleep and don’t know their parents are waiting. Please ask the driver to allow you to check the back seats of the bus.

The driver is not allowed to leave any child alone at a bus stop without your written consent. For parents that give permission to allow their children to walk home alone, we encourage you to discuss and review the safest route home, the importance of paying attention to stoplights, cross walks, blind spots, and what to do if a stranger approaches.

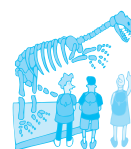
For any other questions regarding transportation, you may contact Deborah Evans-Harbin, Director of Transportation at 925-362-7201.

Safety on Campus

For safety and supervision reasons students attending summer enrichment classes should not arrive before 9:00 a.m. for the first class. Students who arrive early must either go to extended care or be supervised by a parent until the teacher arrives. Classes for the younger students will be located next to each other so the teachers can safely supervise the switch of one class period to the next.

Traffic Safety

In order to ensure safety for everyone, we need your help and cooperation. The traffic situation in the parking lot has been a major safety concern of staff and parents. Please, NO CELL PHONES IN THE PARING LOT. When driving your children to school, please honor the 5 mph speed limit. It is very important that you drive slowly and watch for children. If you want to walk you children to their classrooms you should park your car in the lower parking lot and walk with them.



Field Trips

While we make every effort to send our students/campers on the field trips listed in this brochure, it is possible that a

Director will need to change or substitute a particular field trip. In this case, **no credits or refunds will be made.**

Nurses Corner

Make sure all your medical information is turned in. Keep your child home if he or she has a high temperature, an aggressive cough that is difficult to control with over the counter medications, or a runny nose that may indicate an infection.

Only medications that cannot be timed to be administered at home should be sent to school. (Medications to be given 3 times a day usually can be taken before and after school, and at bedtime).

All medications must have an accompanying written statement from the physician detailing the purpose and method of dispensing the medication. Prescription medications must be labeled clearly and in the original dispenser.

Children who will carry asthma inhalers or Epipens must fill out a statement from the physician indicating the child understands the purpose, appropriate method and frequency of use of the emergency medication. It is your child’s responsibility to come to the office for their medication. However, we will make every effort to remind students when possible.



Extended Care

Please keep in mind any student/camper below the age of 15 may not be left

unattended anywhere on campus from 7:30 a.m. until 6:00 p.m. Extended care is available to all participants from 7:30 a.m. to 9:00 a.m. and from 3:45 p.m. to 6:00 p.m. Students who arrive early must either go to extended care or be supervised by a parent until a teacher arrives. The fee for extended care is \$8.00 per hour. It is not necessary to pre-register. You must sign your student/camper in and out at Devil Mountain Summer Camp. If your student/camper is not picked up by 6:00 p.m., you will be charged \$1.00 per minute payable to the extended care supervisor on duty. On Fridays, please pick up your weekly charges from the DMSC counselor in charge, and be prepared to pay with a check or cash. Invoices not picked up will be added to your statement of account and mailed to your home.

Campers or students who arrive early may participate in the breakfast club. A counselor will walk to the Main Hall who has pre-registered.